

## CO<sub>2</sub> one-way bottles for use in thermal releases

- ◆ Only for use in our thermal releases. Nominal temperature of the used thermo bulb must not be higher than the CO<sub>2</sub> bottle temperature rating!
- ◆ Available in packing units (PU) only

### Types:

#### CO<sub>2</sub> bottles, 1/2" UNF thread:

**20g:** dia. 26 x 115mm, nominal temperature 93°C, filling factor 0,54g/ml, 1 packing unit = 162 pieces

**24g:** dia. 26 x 115mm, nominal temperature 68°C, filling factor 0,65g/ml, 1 packing unit = 162 pieces

**38g:** dia. 30 x 144mm, nominal temperature 93°C, filling factor 0,58g/ml, 1 packing unit = 100 pieces

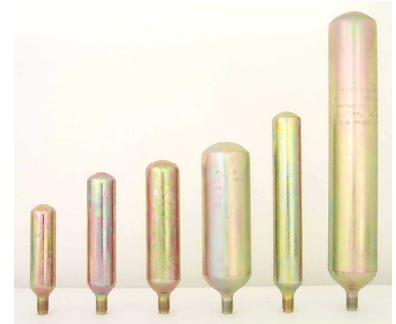
**40g:** dia. 30 x 144mm, nominal temperature 68°C, filling factor 0,62g/ml, 1 packing unit = 100 pieces

**55g:** dia. 35 x 159mm, nominal temperature 93°C, filling factor 0,58g/ml, 1 packing unit = 70 pieces

**80g:** dia. 35 x 217mm, nominal temperature 93°C, filling factor 0,57g/ml, 1 packing unit = 50 pieces

**120g:** dia. 50 x 178mm, nominal temperature 93°C, filling factor 0,56g/ml, 1 packing unit = 30 pieces

**150g:** dia. 50 x 178mm, nominal temperature 68°C, filling factor 0,70g/ml, 1 packing unit = 30



#### CO<sub>2</sub> bottles, W21,8 x 1/14" thread (F):

(in conformity with NFS 61-939)

**25g:** dia. 30 x 150mm, nominal temperature 93°C, 1 packing unit = 100 pieces

**40g:** dia. 30 x 211mm, nominal temperature 93°C, 1 packing unit = 70 pieces

**80g:** dia. 50 x 184mm, nominal temperature 93°C, 1 packing unit = 30 pieces

**120g:** dia. 50 x 239mm, nominal temperature 93°C, 1 packing unit = 15 pieces



**For special purpose bottles, please inquire**

### **Thermo bulbs:**

- ◆ When using thermo bulbs (glass tubes) in VdS approved valves, be sure no bulbs are used other than those tested together with the appropriate valve (see valves)
- ◆ Some types available in packing units (PU) only

### **Types:**

#### **G5-RWA-68 (red):**

Thermo bulb dia. 5mm, nominal temperature 68°C

#### **G5-RWA-93 (green):**

Thermo bulb dia. 5mm, nominal temperature 93°C

#### **G5-RWA-110 (green):**

Thermo bulb dia. 5mm, nominal temperature 110°C

#### **G5-RWA-141 (blue):**

Thermo bulb dia. 5mm, nominal temperature 141°C

#### **G8-RWA-68 (red):**

Thermophiole Ø8mm, nominal temperature 68°C,  
1 VE = 200 pcs.

#### **G8-RWA-93 (green):**

Thermo bulb dia. 8mm, nominal temperature 93°C,  
1 VE = 200 pcs

#### **G8-RWA-110 (green):**

Thermo bulb dia. 8mm, nominal temperature 110°C,  
1 VE = 200 pcs

#### **G8-RWA-141 (blue):**

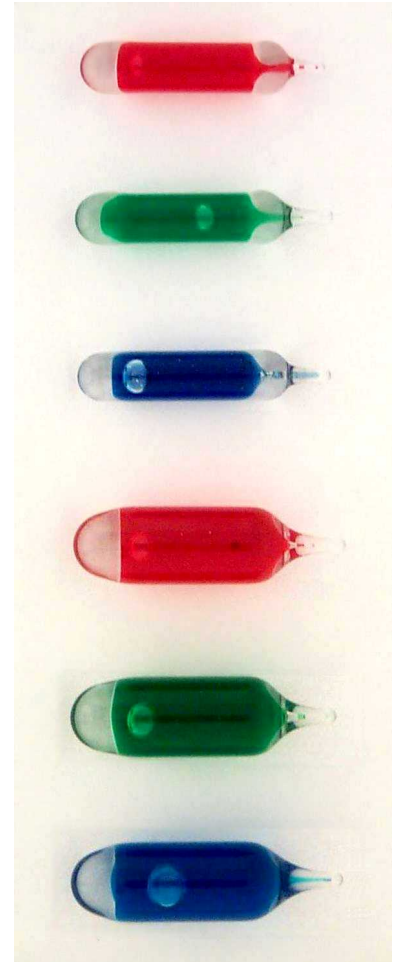
Thermo bulb dia. 8mm, nominal temperature 141°C,  
1 VE = 200 pcs

**For special Thermo bulbs, please inquire**

### **Ejector for taped thermo bulbs:**

- ◆ Manually operated ejector for dia. 5mm taped thermo bulbs. Please order required taped thermo bulbs in packing units of 1.000, 1.500, 2.000 or 2.500 pieces
- ◆ By actuation of the ejecting lever, one thermo bulb will be ejected at a time

**For automatic ejector, please inquire**



## CO<sub>2</sub> one-way bottles for use in non-automatic releases

◆ Available in packing units (PU) only

### Types:

#### CO<sub>2</sub> bottles, 1/2" UNF thread:

**20g:** dia. 26 x 115mm, nominal temperature 93°C,  
filling factor 0,54g/ml, 1 packing unit = 162 pieces

**24g:** dia. 26 x 115mm, nominal temperature 68°C,  
filling factor 0,65g/ml, 1 packing unit = 162 pieces

**38g:** dia. 30 x 144mm, nominal temperature 93°C,  
filling factor 0,58g/ml, 1 packing unit = 100 pieces

**40g:** dia. 30 x 144mm, nominal temperature 68°C,  
filling factor 0,62g/ml, 1 packing unit = 100 pieces

**55g:** dia. 35 x 159mm, nominal temperature 93°C,  
filling factor 0,58g/ml, 1 packing unit = 70 pieces

**75:** dia. 30x 205mm, nominal temperature 50°C,  
filling factor 0,74g/ml, 1 packing unit = 75 pieces

**80g:** dia. 35 x 217mm, nominal temperature 93°C,  
filling factor 0,57g/ml, 1 packing unit = 50 pieces

**120g:** dia. 50 x 178mm, nominal temperature 93°C,  
filling factor 0,56g/ml, 1 packing unit = 30 pieces

**150g:** dia. 50 x 178mm, nominal temperature 68°C,  
filling factor 0,70g/ml, 1 packing unit = 30 pieces

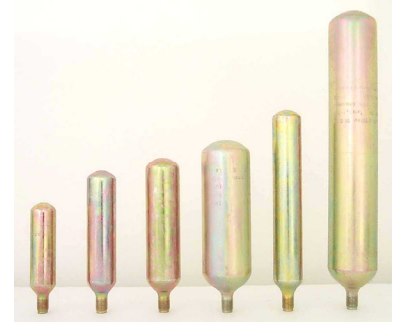
**300g:** dia. 50 x 315mm, nominal temperature 50°C,  
filling factor 0,71g/ml, 1 packing unit = 15 pieces

**500g:** dia. 60 x 342mm, nominal temperature 50°C,  
filling factor 0,75g/ml, 1 packing unit = 10 pieces

**750g:** dia. 60 x 490mm, nominal temperature 50°C,  
filling factor 0,71g/ml, 1 packing unit = 10 pieces

**1000g:** dia. 80 x 382mm, nominal temperature 50°C,  
filling factor 0,71g/ml, 1 packing unit = 6 pieces

**1500g:** dia. 80 x 525mm, nominal temperature 50°C,  
filling factor 0,75g/ml, 1 packing unit = 6 pieces



## Valves Accessories

### CO<sub>2</sub> bottles, M15 x 1,25 thread (NFM): (conforms to NFS 61-939)

**25g:** dia. 30 x 150mm, nominal temperature 93°C,  
1 packing unit = 100 pieces

**40g:** dia. 30 x 211mm, nominal temperature 93°C,  
1 packing unit = 70 pieces

**120g:** dia. 50 x 239mm, nominal temperature 93°C,  
1 packing unit = 15 pieces

**300g:** dia. 50 x 315mm, nominal temperature 50°C,  
1 packing unit = 15 pieces

**500g:** dia. 60 x 342mm, nominal temperature 50°C,  
1 packing unit = 10 pieces

**750g:** dia. 60 x 496mm, nominal temperature 50°C,  
1 packing unit = 10 pieces



**For special purpose bottles, please inquire**

**DS-S-42 (Pressure switch, normally open contact, 42V):**

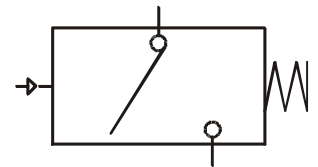
- ◆ Pressure switch in galvanised steel enclosure, for electrically monitoring a compressed-air line
- ◆ Pressure switch operates when factory-set threshold of 5bar is exceeded
- ◆ Switching pressure can be factory-set within a range of 1 - 10bar if requested
- ◆ Switching tolerance  $\pm 0,5$ bar
- ◆ Safe against overpressure up to 300bar
- ◆ Normally open contact, switching capacity 42V / 100VA
- ◆ Ambient temperature range:  $-30^{\circ}\text{C}$  to  $+120^{\circ}\text{C}$
- ◆ Protection IP65, terminals IP00
- ◆ Screw terminals for supply lead 0,5 - 1,5mm<sup>2</sup>
- ◆ Connection thread 1/4", enclosure wrench size 24
- ◆ Also available as normally closed contact if requested



DS-S-42 with protection cap

**Protection cap for DS-S-42:**

- ◆ Protection cap with central cable entry
- ◆ Cable diameter 1,5 to 5mm
- ◆ Protection cap is also available for entry of two single conductors 1,7 to 2,2mm if requested



**DS-W-230 (Pressure switch, two-way contact, 230V):**

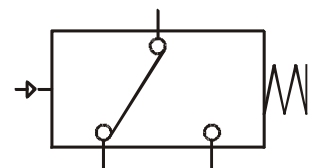
- ◆ Pressure switch in galvanised steel enclosure, for electrically monitoring a compressed air line
- ◆ Pressure switch operates when factory-set threshold of 5bar is exceeded
- ◆ Response pressure can be set at factory within a range of 1 - 10bar if requested
- ◆ Response tolerance  $\pm 0,5$ bar
- ◆ Safe against overpressure up to 300bar
- ◆ Change over contact, switching capacity 4A / 230VAC, 2A / 50 V-
- ◆ Ambient temperature range:  $-30^{\circ}\text{C}$  to  $+120^{\circ}\text{C}$
- ◆ Protection IP65, terminals IP00
- ◆ Plug terminals 6,3 x 0,8mm
- ◆ Connection thread 1/4", enclosure wrench size 27



DS-W-230 with angle connector

**Angle connector for DS-W-230:**

- ◆ Protection cap with central cable entry PG9 and screw-type seal
- ◆ Screw terminals for supply leads 0,5 - 1,5mm<sup>2</sup>



## Pressure hoses DRS

- ◆ Pressure hose, e.g. for connecting thermo valves and pneumatic cylinders.  
Flexible hose can be directly connected to the cylinder inlet by means of compression-type fittings, requiring no pipe with swivel screw fitting for connection
- ◆ Hose with stainless steel (1.4301) braiding, ferrules made of steel (1.4305)
- ◆ 2 pipe stubs of nickel-plated brass, OD 6mm
- ◆ Hose material: polytetrafluorethylene
- ◆ Nominal bore (free cross section) 3mm
- ◆ Max. operating pressure at 24°C 160bar
- ◆ Ambient temperature range: -20 to +250°C

### Types:

**DRS-300:** total length 300mm

**DRS-400:** total length 400mm

**DRS-500:** total length 500mm

**DRS-600:** total length 600mm

**DRS-700:** total length 700mm

**DRS-1100:** total length 1.100mm

**DRS-1300:** total length 1.300mm

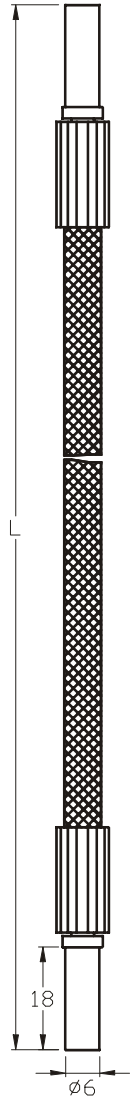
**DRS-1600:** total length 1.600mm

**DRS-1800:** total length 1.800mm

**DRS-2100:** total length 2.100mm

**DRS-2600:** total length 2.600mm

**DRS-2800:** total length 2.800mm



**For extra lengths between 100 and 6.000mm, please inquire**