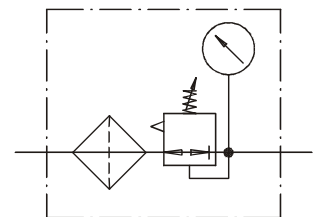


Filter pressure reducer - 1/4" (FR-1/4):

- ◆ Adjustable filter pressure reducer with pressure gauge, water separator and condensed water drain plug
- ◆ Outlet pressure infinitely variable from 0 - 10bar
- ◆ Maximum inlet pressure 16bar
- ◆ Ambient temperature range: -20°C to +50°C
- ◆ For pipe connection of the filter pressure reducer, 2 male connectors 1/4" (e.g. B5-6-1/4) will be required additionally

Design of the SHEVS may require reliable venting of the piping.



Mounting bracket for filter pressure reducer (MK-FR):

- ◆ Angle sheet iron with bore holes for mounting the filter pressure reducer (e.g. in ventilation control centre)

