

### **BG mounting - fixed type with double stroke cylinder**

Pneumatically operated mounting for installation in domelights etc.  
 Opening angle 140° or 165°

Fixed cross beam type for domelights with 800, 1.000, 1.300 and 1.600mm inner width of curb and a hinge size of 65 to 70mm

Ideally suited for domelights: Inner width = nominal width - 200mm  
 Due to cross beam design, only small forces are introduced into the curb and domelight frame

Space-saving due to flat design

Ease of assembly by hanging the mounting from above into the curb or frame

Available in 4 sizes with different pneumatic cylinders Type D (for selection of size, see drawing/table on page 2)

As cylinder locks automatically in open position, unintentional closing is not possible

Ventilation mode: At a pressure of up to 6bar, mounting opens to ventilation position (approx. 300mm opening width)

SHE mode: At a pressure of >10bar, cylinder completes a full stroke, and mounting opens to SHE-position.

Domelight locked in closed position by mechanical hook locking device MHV and adjustable locking bolt EVB 3-M12 (see locking elements)

Upper cross beams including preassembled hook locking device MHV (upper cross beams)

Standard connection for 6mm pipe

When ordering, please complete the dimensional sheet, and specify inner width

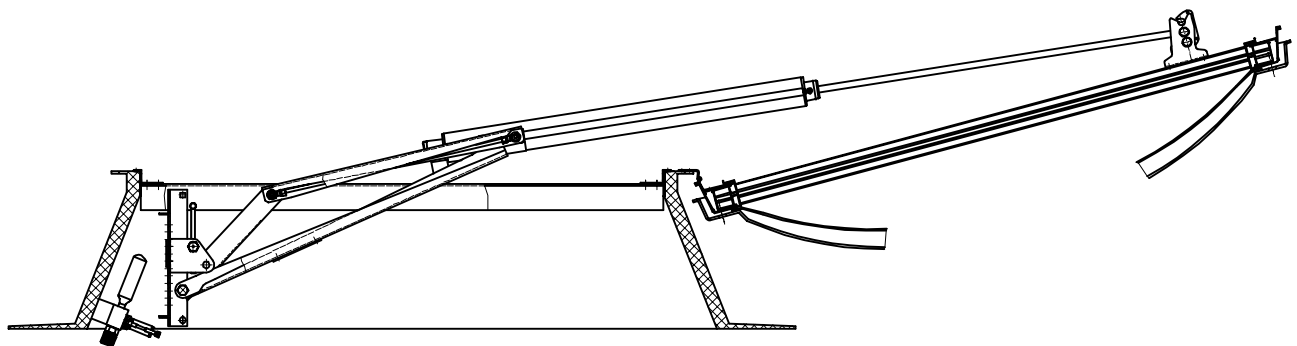
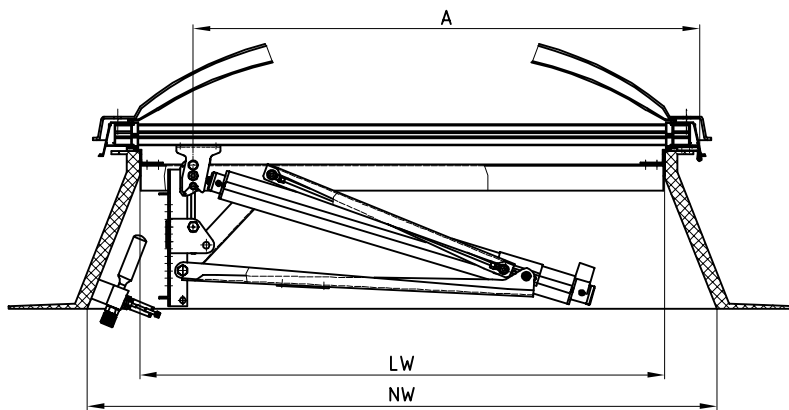


### **Accessories:**

- ◆ **Upper cross beams:** Upper cross beams including preassembled hook locking device MHV (see upper cross beams).
- ◆ **EVB 3-M12:** Adjustable locking bolt

**For special types please inquire**

**BG mounting - fixed type with double stroke cylinder**



Type	Nominal width NW	Inner width LW	A
BG1.11	1000	800	765
BG2.11	1200	1000	965
BG3.11	1500	1300	1250
BG4.11	1800	1600	1550